

TOYOTA



FUTURE FACILITY DISPLAYS



NAVIGATE THROUGH THE CATALOG BY CLICKING ON THE DESIRED PRODUCT.
TO RETURN TO THIS PAGE, CLICK THE IDEAL IMAGE LOGO.


B8.1S

B8.1L

B8.2S

B8.2L

B8.3S

B8.3L

B8.4S

B8.4L

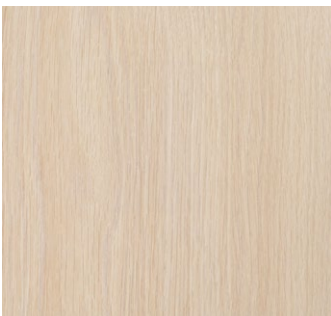
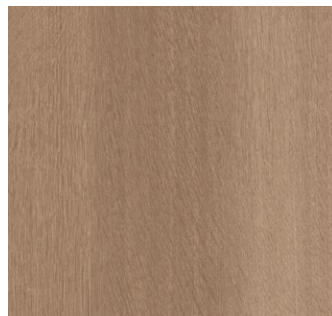
B8.5S

B8.5L

B8.6S

B8.6L

Finish Options


Beigewood
LAMINATE

Loft Oak
LAMINATE

Skyline Walnut
LAMINATE

B8.1S Small Niche Wall Display

DIMENSIONS: 54" W X 14 ¾" D X 96" H
GLASS DISPLAY: (1) 36"W X 12"D X 12"H

Illuminated display wall with a glass case on adjustable standard and brackets. All surfaces are finished in specified colors. *Additional hanging hardware sold separately.*



SHOWN IN LOFT OAK. Accessories not included.

UNDERMOUNT
LED LIGHTING

ADJUSTABLE GLASS
DISPLAY CASE

UNDER-SHELF
LED LIGHTING



B8.1L Large Niche Wall Display

DIMENSIONS: 120" W X 14 ¾" D X 96" H
GLASS DISPLAY: (2) 12"W X 12"D X 12"H

Illuminated display wall with (2) glass cases on adjustable standards and brackets. All surfaces are finished in specified colors. *Additional hanging hardware sold separately.*



SHOWN IN LOFT OAK. Accessories not included.

UNDERMOUNT
LED LIGHTING

ADJUSTABLE GLASS
DISPLAY CASES

UNDER-SHELF
LED LIGHTING



B8.2S Small Niche Wall Display

DIMENSIONS: 60" W X 14 ¾" D X 96" H

Illuminated display wall with fixed shelves.
All surfaces are finished in specified colors.
Additional hanging hardware sold separately.



SHOWN IN LOFT OAK. Accessories not included.

UNDERMOUNT
LED LIGHTING

FIXED SHELVES



B8.2L Large Niche Wall Display

DIMENSIONS: 120" W X 14 ¾" D X 96" H

Illuminated display wall with fixed shelves,
Toyota logo, and rim display opening. All
surfaces are finished in specified colors.
Additional hanging hardware sold separately.



SHOWN IN LOFT OAK. Accessories not included.

RIM DISPLAY
OPENING

UNDERMOUNT
LED LIGHTING

TOYOTA LOGO

FIXED SHELVES

HANGRAIL BRACKETS



B8.3S Small Niche Wall Display

DIMENSIONS: 61½" W X 14¾" D X 96" H

Illuminated display wall with an open-frame shelving unit formed by a series of welded steel bars and adjustable standards and brackets. All surfaces are finished in specified colors. *Additional shelves and hanging hardware sold separately.*



SHOWN IN LOFT OAK. Accessories not included.

UNDERMOUNT
LED LIGHTING



HANGRAIL
BRACKETS

UNDERMOUNT
LED LIGHTING

FIXED SHELVES

B8.3L Large Niche Wall Display

DIMENSIONS: 120" W X 14¾" D X 96" H

Illuminated display wall with an open-frame shelving unit formed by a series of welded steel bars and adjustable standards and brackets. All surfaces are finished in specified colors. *Additional shelves and hanging hardware sold separately.*



SHOWN IN LOFT OAK. Accessories not included.

UNDERMOUNT
LED LIGHTING

HANGRAIL
BRACKETS

FIXED SHELVES



B8.4S Small Wall Shelving Unit

DIMENSIONS: 36" W X 15 5/16" D X 96" H

Illuminated display wall with adjustable shelves on standard and brackets. All surfaces are finished in specified colors. *Additional hanging hardware sold separately.*



SHOWN IN LOFT OAK. Accessories not included.

UNDERMOUNT
LED LIGHTING

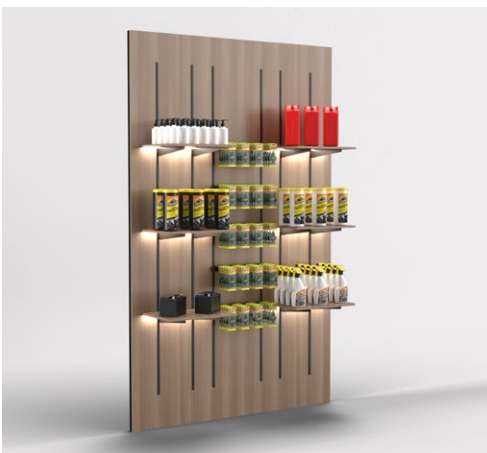
ADJUSTABLE
SHELVES



B8.4L Large Wall Shelving Unit

DIMENSIONS: 60" W X 15 5/16" D X 96" H

Illuminated display wall with adjustable shelves on standard and brackets. All surfaces are finished in specified colors. *Additional hanging hardware sold separately.*



SHOWN IN LOFT OAK. Accessories not included.

UNDERMOUNT
LED LIGHTING

HANGRAIL
BRACKETS

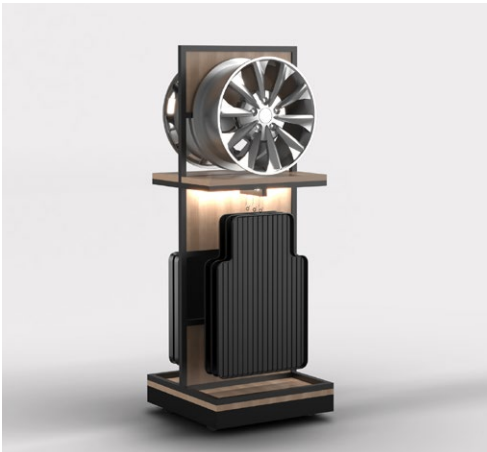
ADJUSTABLE
SHELVES



B8.5S Small Floor Display

DIMENSIONS: 24" W X 24" D X 66¹/₆" H

Illuminated display cart with an open-frame shelving unit formed by a series of welded steel bars. Includes a welded rim mount. Roll around cart is on casters. All surfaces are finished in specified colors.



SHOWN IN LOFT OAK. Accessories not included.

RIM MOUNT

UNDERMOUNT
LED LIGHTING

CASTERS



BUILT-IN
HANGING DISPLAY

B8.5L Large Floor Display

DIMENSIONS: 42" W X 24" D X 66¹/₂" H

Illuminated display cart with an open-frame shelving unit formed by a series of welded steel bars. Roll around cart is on casters. All surfaces are finished in specified colors.



SHOWN IN LOFT OAK. Accessories not included.

MESH SCREEN

UNDERMOUNT
LED LIGHTING

CASTERS



B8.6S Small Floor Display

DIMENSIONS: 24" W X 24" D X 67" H

Illuminated display cart on roll-around casters with glass display case. All surfaces are finished in specified colors. *Additional hanging hardware sold separately.*



SHOWN IN LOFT OAK. Accessories not included.

GLASS DISPLAY CASE

INTERIOR LED LIGHTING

CASTERS



METAL PEGBOARD HANGING DISPLAY

B8.6L Large Floor Display

DIMENSIONS: 36" W X 24" D X 62½" H

Illuminated display cart on roll-around casters with standards and adjustable brackets. All surfaces are finished in specified colors. *Additional hanging hardware sold separately.*



SHOWN IN LOFT OAK. Accessories not included.

INTERIOR LED LIGHTING

CASTERS



FIXED SHELVES

HANGRAIL BRACKETS

Furniture & Fixture Care & Warranty Guide

CARE

Painted Surfaces

Wipe with a soft, damp microfiber cloth. For tough stains, use automotive paint cleaner.

Stainless Steel

Clean with a soft, damp microfiber cloth. For extra shine, use Stainless Steel Magic.

Laminate Surfaces

Clean with lukewarm water and mild detergent. Wipe dry; pre-clean heavy dirt with Dirtex. To avoid streaks, finish with a water rinse. Do not soak.

Fabric Graphics

Dust with a static wipe or hand vacuum. Treat stains promptly.

Graphics with Protective Coating

Clean with lukewarm water and mild detergent; dry with a soft cloth. Pre-clean heavy dirt with Dirtex, rinse with water to avoid streaks. Do not soak.

Large Format Graphics with Protective Coating

Clean with lukewarm water and mild detergent.

Glass

Clean clear glass with glass cleaner. For frosted glass and tough fingerprints, use denatured alcohol.

Wood & Veneer Routine Care

Normal Cleaning: Dust regularly with a slightly damp, soft, lint-free cloth. Wipe dry with a dry, soft cloth in the direction of the wood grain. Spills should be immediately wiped up with a damp cloth.

Once a month: Clean the surface with a soft cloth dampened with a quality cleaner formulated for wood furniture. Wipe the surface in the direction of the wood grain to remove dirt and fingerprints. Wipe dry with a clean, dry cloth.

Plastic and Acrylic

Regularly clean with Dirtex/Brilliance to prevent dirt buildup. Avoid harsh cleaners.

Quartz, Krión & other Solid Surfaces

Clean with warm water and soap or non-abrasive, ammonia-free.

WARRANTY

Guarantee

Products are guaranteed to be high quality and free of manufacturing defects.

Duration

Begins on setup date. Metal/wood: 5 years; Graphics: 2 years.

Coverage

Includes repairs/replacements for normal use defects. Excludes misuse, external damage, and environmental conditions outside intended design.

Process

Contact Ideal Image for warranty claims. Provide information for evaluation. Repairs/replacements completed within 30 days of approval.

Conditions

Warranty service available after full payment received.

Customer Service

1-800-774-7617 (dial "0" to connect with the operator). Mon-Fri, 8 AM - 5 PM EST.
customerservice@idealimageinc.com

Response Time

Next business day. Issues addressed and/or resolved within 30 days of initial contact.

Electronics, TV's, Appliances & Seating

Manufacturer's warranty applies.

Transportation & Set-up

As a full-service company, Ideal Image offers each of our clients the white-glove treatment from project conception to completion. As your project is being prepared for transportation, a warehouse supervisor and team conduct a thorough cleaning and final load inspection, ensuring all components are in order and meet quality construction standards. Fixtures and components are then carefully loaded and secured, limiting any shipping damage and inconvenience during delivery and unloading.





Our highly trained professional set-up teams consist of one to four installation technicians, including an on-site supervisor with substantial expertise. On-site supervisors train for a minimum of five years in millwork fabrication, fixture and cabinetry construction, and leadership experience. They work closely with set-up technicians to ensure quality work. Site supervisors are in frequent contact with Ideal Image project managers throughout the job progression to navigate timelines or change orders.

During completion, the site supervisor and client will conduct a walk-through with a provided line-item checklist to verify components are satisfactorily installed and completed. Any repairs or further adjustments derived during the walk-through will be addressed by the site supervisor and communicated to our project managers before the Ideal Image team departs to guarantee an efficient turnaround.

Since 1993, Ideal Image has been creating environments that build brand power through color, texture, size and shape.

Our state-of-the-art manufacturing facility is equipped with the latest automated production technology, including CNC routing, cutting, laminating and fabrication equipment.

As a manufacturer and supplier of custom furniture, graphics, interactive points of purchase, and custom displays, we have the quality, service and experience to deliver your next project.

 **CORPORATE HEADQUARTERS**
115 Haas Drive, Englewood, OH 45322  idealimageinc.com  800 774 7617  937-832-5270





IDEAL IMAGE
— Est. 1993 U.S.A. —
Building Brand Power



CORPORATE HEADQUARTERS
115 Haas Drive, Englewood, OH 45322



idealimageinc.com



800 774 7617



937-832-5270